

Restoration

The lost beauty of this area can be restored and the streams can again come to life with wildlife and fish. Ice skating on the pond will again be a reality and not something parents tell their children about.



Conservation Volunteers

The Trough Creek Watershed Association is governed by an elected five-member Executive Board and the general membership.

We Meet Monthly

The Trough Creek Watershed Association meets on the 4th Tuesday of each month at the Reality Theatre in Robertsdale, Pa. Meeting time is 7:00 p.m.

You Can Help... Join Us Today!

Without your help we will never succeed. Please join us today and help make this area a better place to live for future generations.

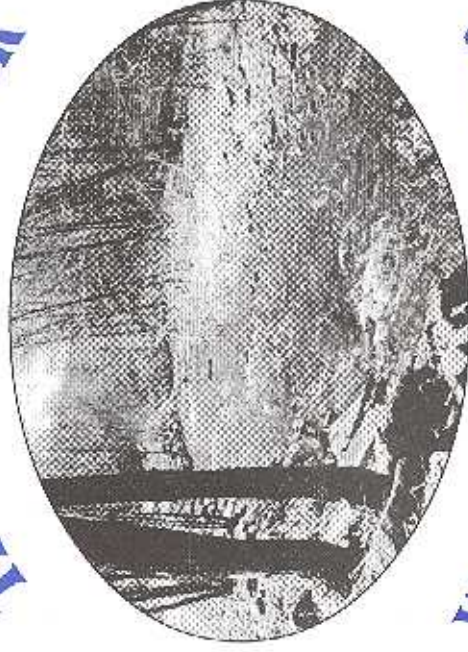
To join the Watershed Association, complete the membership form below and mail with your check to:

Trough Creek Watershed Association
P.O. Box 66
Wood, PA 16694

For additional information please call:

(814) 635-4120
Fax: (814) 635-4001

The Trough Creek



Watershed Association

Our Goals

The goal of the Trough Creek Watershed is to restore and preserve a safe water supply, to provide a safe natural environment for people, plants and animals. We hope to restore the waters in Trough Creek to again supply the clean drinking water, sportsman activities and recreational activities that were once present.

Mining and the lack of good sewage facilities had turned the creek into water that was not fit for people or fish. The introduction of the new water/Sewage facilities has helped clear the water from one evil. We now intend to route the headwaters back to their normal paths and clear them of the acid mine drainage.

Trough Creek Watershed Association

MEMBERSHIP FORM

- \$5 Individual \$50 Small Business
 \$10 Family \$150 & up Corporation
 \$25 Organization

Date _____

Name _____

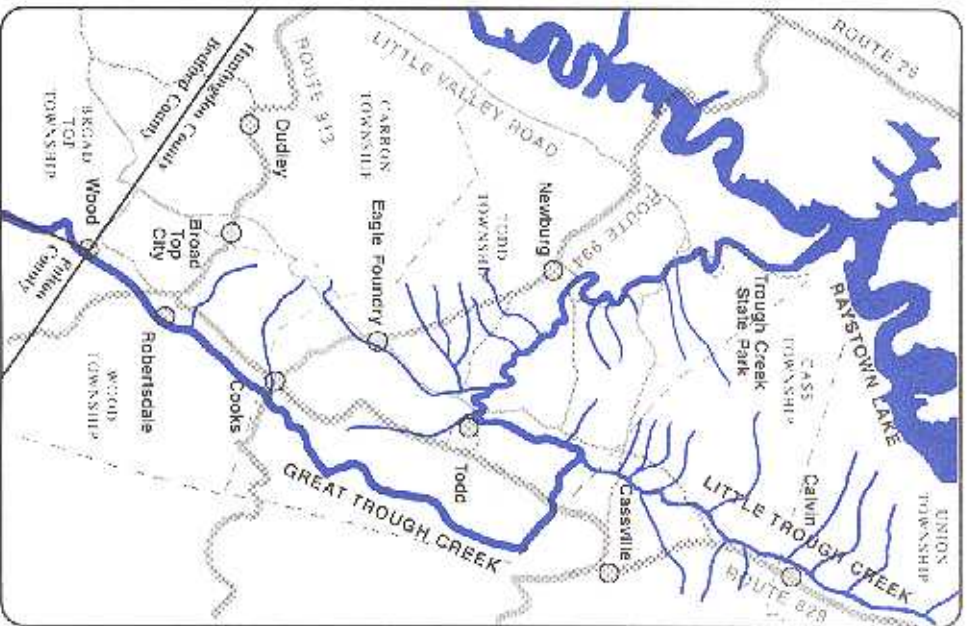
Contact Person _____

Address _____

Phone _____

Description of the Trough Creek Watershed

Trough Creek starts at its headwaters in Wood, continues down near Cassville where it makes a sharp left. It continues, then intersects with Little Trough Creek. It again turns left until it reaches Todd where it turns right, passes through Trough Creek State Park, and into Raystown Lake.



The Watershed Association

Trough Creek Watershed Association is a nongovernmental, volunteer organization formed by concerned citizens to address the problems of acid mine drainage, water quality and quantity, storm water runoff and the need for funding of natural resources improvement projects.

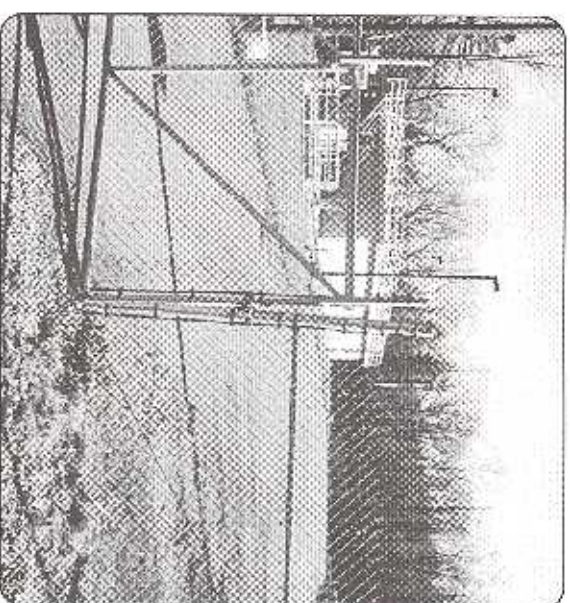
Your Membership will Help to Support...

- Water Conservation*
- A Cleaner Environment*
- Flood Control*

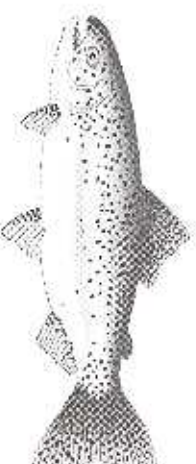
Objectives of the Trough Creek Watershed Association

- Offer practical solutions to improve water quality and quantity.
- Promote ecologically sound land-use practices.
- Provide a safe natural environment for residents through community involvement, education, and cooperation.
- Address the problems of flood control, acid mine drainage, and stream bank erosion.
- Correct existing pollution problems and stop illegal dumping within the watershed.
- Promote economic development and historic preservation.

Water Quality Improvement



New WBTW Sewer Plant in Robertsdale, Pa.



Outreach Programs

- Invite speakers to public meetings to build public awareness of watershed issues that affect Trough Creek and the environment in general.
- Conduct volunteer water monitoring programs to identify water quality and prioritize the problem areas along Trough Creek.